

# Uploader

## Software User Guide

---



*10101....110101....*

## Dear Customers,

Thank you for purchasing this digital hand tool.  
This manual will help you to upload data records to PC. **Please read this manual completely**, and keep it nearby for future reference.

## BEFORE GETTING STARTED

### PREPARATIONS

- Installation CD.
- USB communication cable.
- Intel Pentium compatible PC with USB port supported.
- Digital hand tool with communication function supported.



#### Precaution:

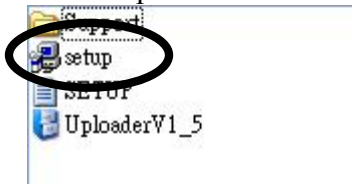
1. **Communication function is only supported on some models. Check the model No. and its specification before using communication function.**
2. **Do not insert the plug of communication cable into hand tool that does not support communication function.**

### COMPATIBILITY

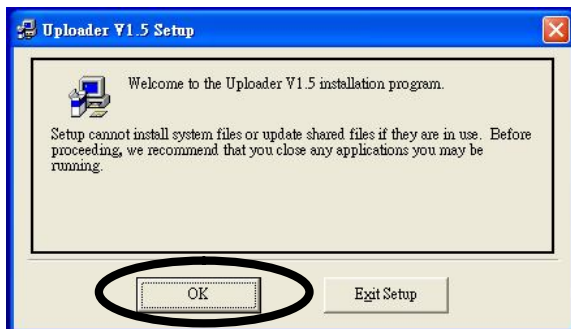
- Available USB port
- Microsoft Windows XP/2000/Vista/7/8 OS

# INSTALLATION

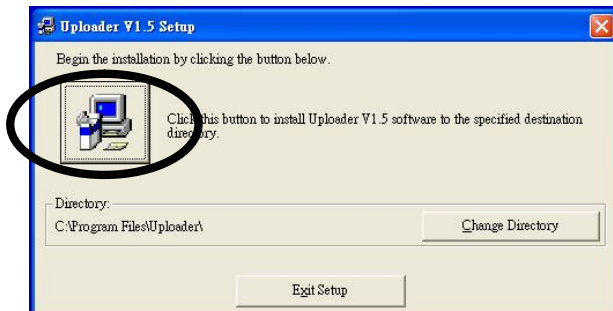
- Insert the installation CD into CD-ROM.
- In the root directory of CD, run the **setup.exe** to install Uploader.



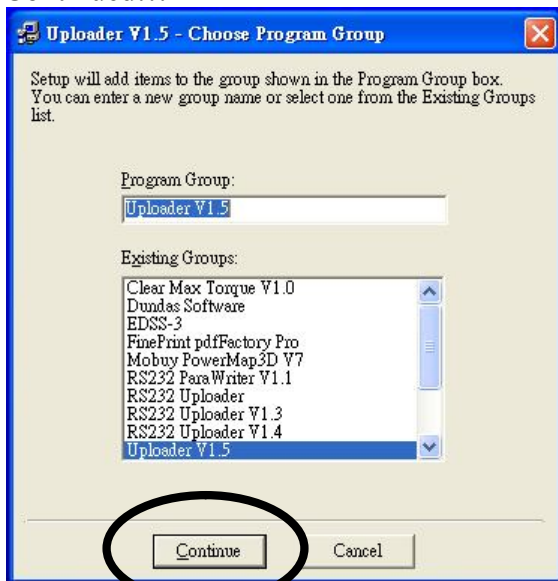
- Following the instructions during installation.
- Press OK.



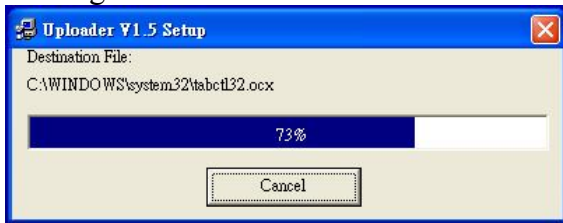
- Continued...



- Continued...



■ Waiting....



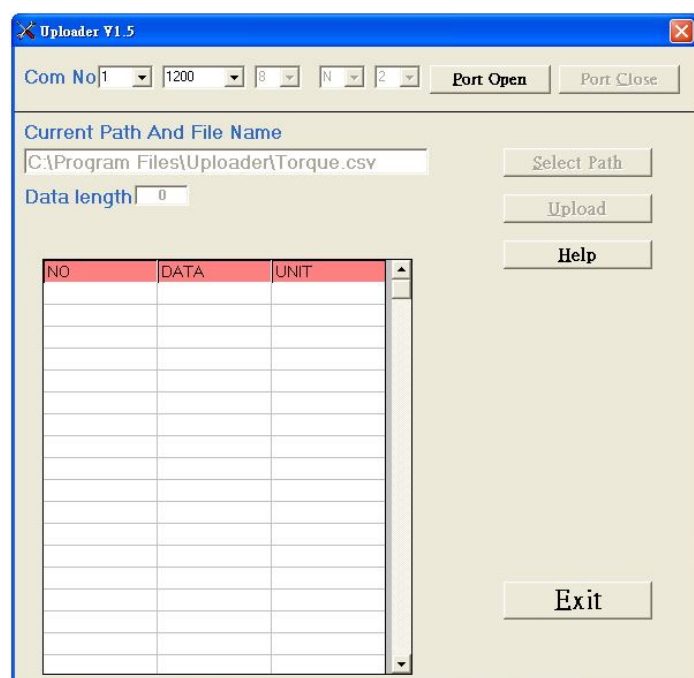
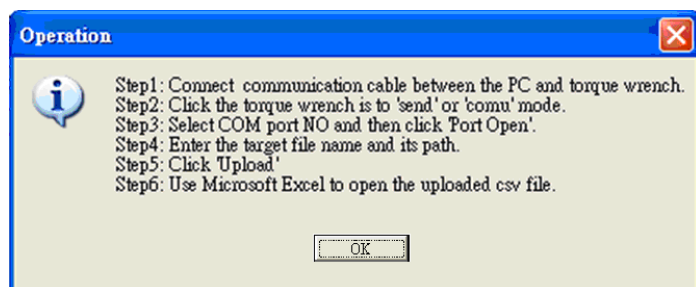
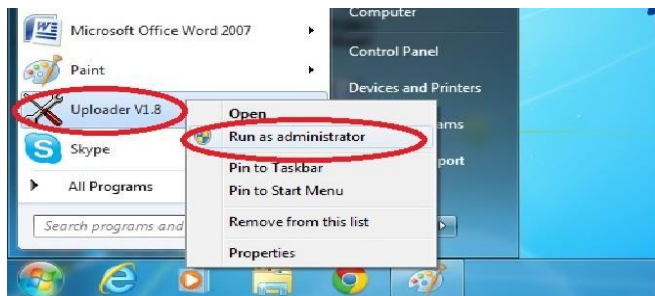
■ Completed.



# OPERATIONS

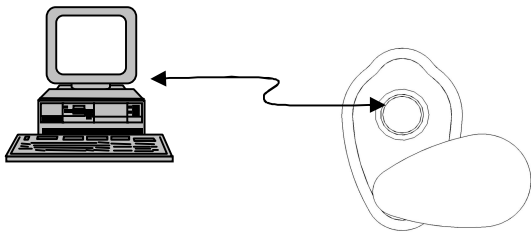
## RUN Uploader

- Select Start/Program/ Uploader V1.x/ Uploader V1.x to run Uploader. Then the following forms are shown.
- **Notice** : If Uploader software is installed in **Windows 7 / 8** , please choose **“Run as administrator”** to execute Uploader.



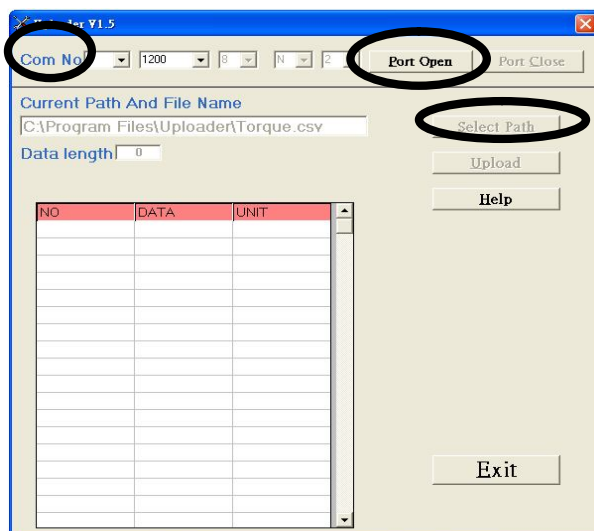
## CONNECT COMMUNICATION CABLE

- Connect the communication cable between the PC and hand tool. Then, click hand tool to have “Send” mode.

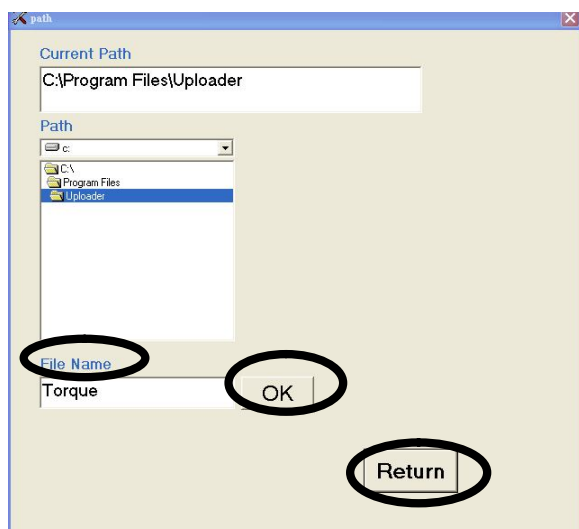


## UPLOAD RECORDED DATA

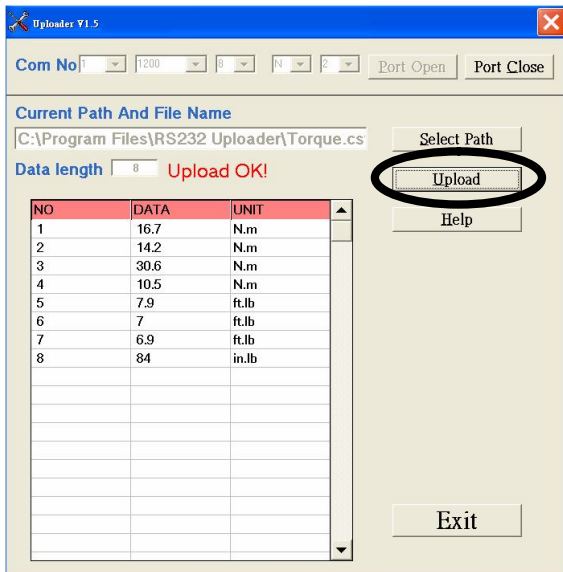
- Make sure the connection between PC and hand tool is already well.
- Reset the tool first.
- Change the hand tool operation mode to “Send”. (Refer to owner’s manual)
- In Uploader, first select the correct COM port No. Then press [Port Open].



- Next, select **the file path** for saving the uploaded data.



- At last, press **upload** button to transmit the records to PC.
- The uploaded data are then shown on the column and be saved in the \*.csv file. Using the Microsoft Excel to view the \*.csv file.



D11						
	A	B	C	D	E	F
1	NO	Data	Unit			
2	1	16.7	N.m			
3	2	14.2	N.m			
4	3	30.6	N.m			
5	4	10.5	N.m			
6	5	7.9	ft.lb			
7	6	7	ft.lb			
8	7	6.9	ft.lb			
9	8	84	in.lb			
10						
11						
12						

Rev. : Uploader 1.11